

## Historical Trends

### Contents:

		Page	
Figure	1.1	Trends in Licensed Drivers, Vehicle Registrations and Collisions	3
	1.2	Trends in Casualty Collision Rates by Vehicles, Drivers and Population	3
	1.3	Trends in Collision Rates for Provincial Highways and Rural Roads	4
	1.4	Trends in Total Victims by Road System	4
	1.5	Trends in Property Damage Only Collisions	5
	1.6	Trends in Personal Injury Collisions	5
	1.7	Trends in Fatal Collisions	6
	1.8	Trends in All Reported Collisions	6
Table	1.1	Property Damage Only Collisions by Month and Year	7
	1.2	Total Injuries by Month and Year	7
	1.3	Total Deaths by Month and Year	8
	1.4	Total Collisions by Month and Year	8

## Historical Trends

This section illustrates the 23-year history of collisions, victims, licensed drivers and vehicles in Saskatchewan.

Reporting definitions must be considered when looking at past trends. Changes to the reporting thresholds have resulted in large declines in property damage only (PDO) collisions during the years 1984, 1993 and 2010. The continued reduction in police resources available for traffic enforcement also had an effect on the number of PDO collisions being reported. This is especially true for the reporting of wildlife collisions since 1996.

The traffic accident reporting system was streamlined on Aug. 1, 2002, so that only collisions involving bodily injury, death, a hit and run, an out-of-province vehicle, an unregistered vehicle, an impaired operator and collisions where vehicles have to be towed are reported to police. Information on all other types of collisions that meet the reporting criteria for our traffic accident system are collected through SGI's claims reporting process. This change has freed up valuable enforcement resources that can be devoted to other high-priority issues. This change resulted in a 49.5% increase in the number of PDO collisions captured by TAIS from 2003 to date as compared to the previous three-year average.

Effective Jan. 1, 2010, the damage threshold for recording PDO collisions from SGI's claims system into TAIS was increased from \$1,000 to \$5,000. This change resulted in a 40-50% decrease of PDO collisions entered into TAIS. See the disclaimer on the back of the front cover.

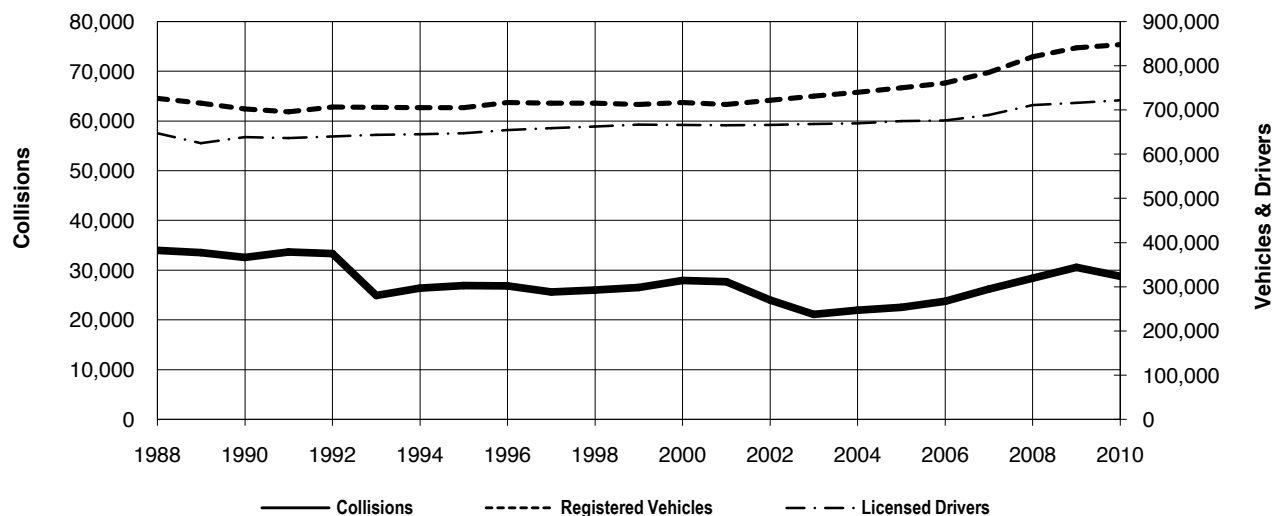
Trends in crashes resulting in fatalities and injuries have shown a steady decline since 1983. Fatal crashes peaked in 1986, while injury crashes peaked in 1987. The five-year averages for fatal and injury crashes are now 131 and 5,006 respectively, compared to 191 and 5,769 between 1983 and 1987. All collisions showed an upward trend from 2002 due to the change in reporting threshold. Data for recent years exhibit a fairly steady count of total collisions in the province. Vehicle counts and the number of licensed drivers have been increasing since 2005.

A complete listing of all the numbers used in the charts and changes in definitions can be found in Appendices A1.1 to A4.2.

# Historical Trends – SECTION 1

## Trends in Licensed Drivers, Vehicle Registrations and Collisions

Figure 1.1



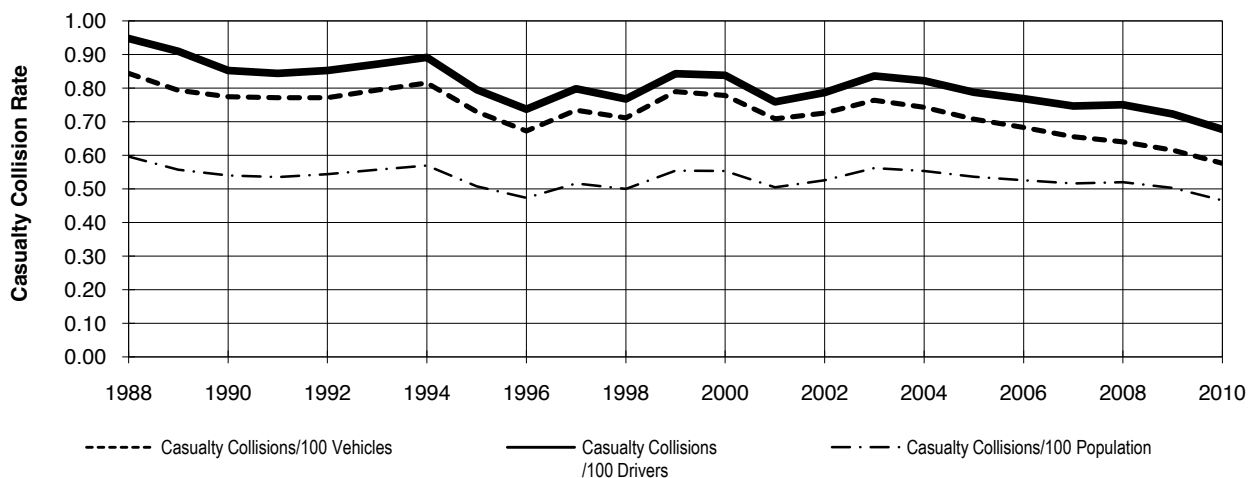
### Three-Year Summary

	2008	2009	2010	% Change
Registered Vehicles	820,504	841,022	848,341	0.87
Licensed Drivers	711,323	716,258	721,809	0.78
Total Collisions	28,399	30,605	28,798	-5.90

See Appendix sections A1.1 to A1.7 for additional details.

## Trends in Casualty Collision Rates by Vehicles, Drivers and Population

Figure 1.2



### Three-Year Summary

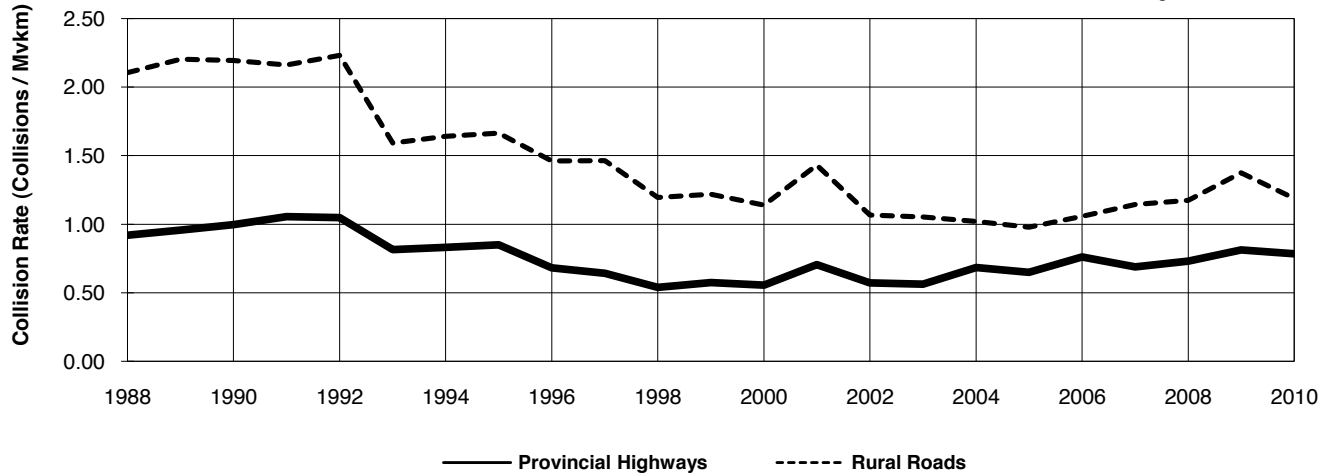
	2008	2009	2010	% Change
Casualty Collisions / 100 Registered Vehicles	0.64	0.62	0.58	-6.34
Casualty Collisions / 100 Licensed Drivers	0.75	0.72	0.68	-6.26
Casualty Collisions / 100 Population	0.52	0.50	0.47	-7.38

See Appendix sections A1.1 to A1.7 for additional details.

# Historical Trends – SECTION 1

**Trends in Collision Rates (Collisions/MvKm) For Provincial Highways and Rural Roads**

Figure 1.3



## Three-Year Summary By Road System

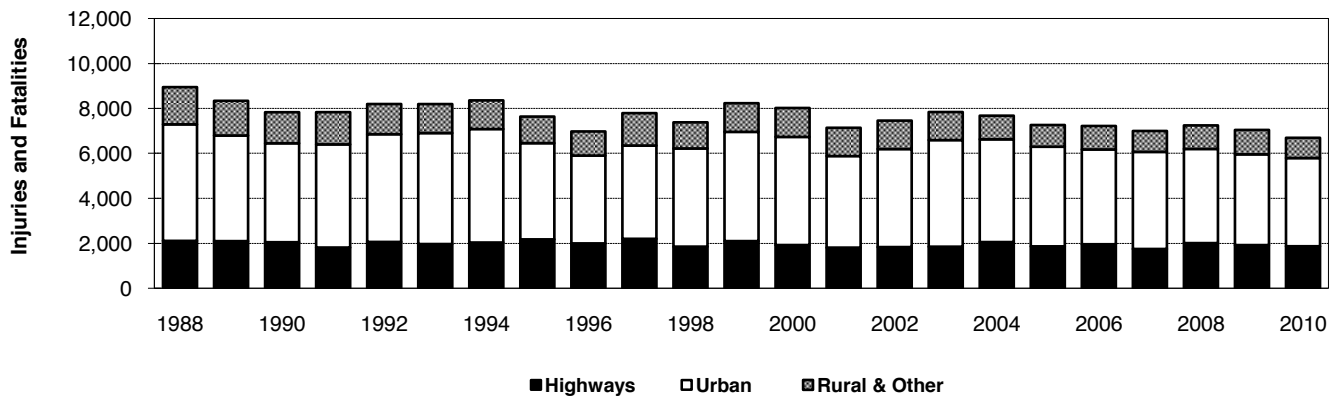
Collisions per Million Vehicle Kms

	2008	2009	2010	% Change
Provincial Highways	0.73	0.81	0.78	-2.47
Rural Roads	1.17	1.38	1.19	-11.85

See Appendix sections A1.1 to A1.7 for additional details.

**Trends in Total Victims by Road System**

Figure 1.4



## Three-Year Summary by Road System

Personal Injuries

	2008	2009	2010	% Change
Provincial Highways	1,902	1,817	1,766	-2.81
Urban Streets	4,166	4,019	3,900	-2.96
Rural Roads	715	788	617	21.70
Other Roads	297	258	235	-8.91
<b>Total Roads</b>	<b>7,080</b>	<b>6,882</b>	<b>6,518</b>	<b>-5.29</b>

Fatalities

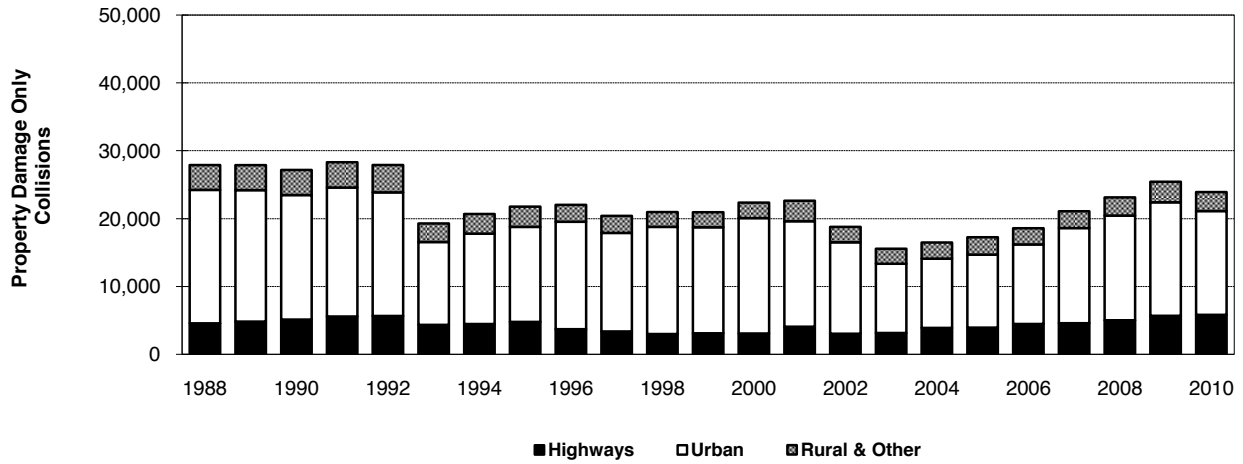
	2008	2009	2010	% Change
Provincial Highways	99	97	96	-1.03
Urban Streets	23	17	23	35.29
Rural Roads	21	35	36	2.86
Other Roads	14	4	12	200.00
<b>Total Roads</b>	<b>157</b>	<b>153</b>	<b>167</b>	<b>9.15</b>

See Appendix sections A1.1 to A1.7 for additional details.

# Historical Trends – SECTION 1

Trends in Property Damage Only Collisions

Figure 1.5



**Three-Year Summary by Road System**

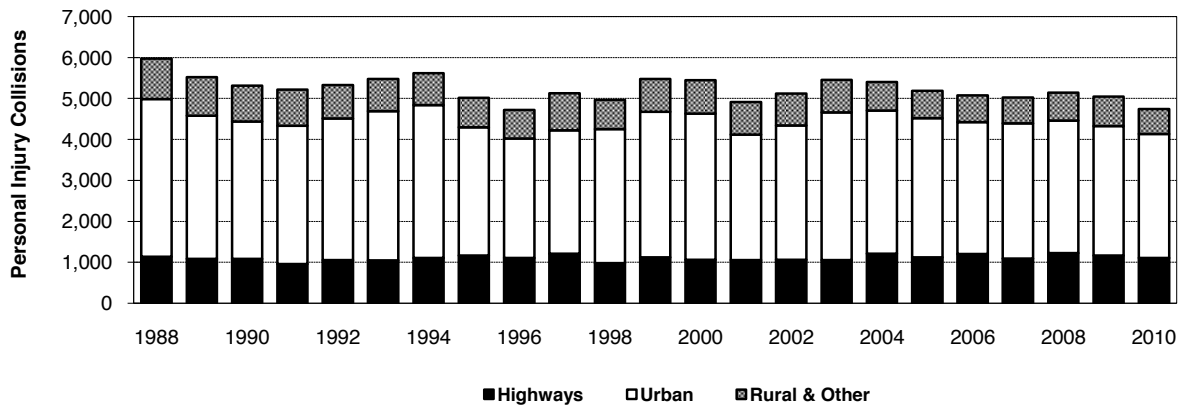
**Property Damage Collisions**

	2008	2009	2010	% Change
Provincial Highways	5,015	5,676	5,815	2.45
Urban Streets	15,428	16,727	15,296	-8.56
Rural Roads	2,013	2,368	2,104	-11.15
Other Roads	666	660	695	5.30
<b>Total Roads</b>	<b>23,122</b>	<b>25,431</b>	<b>23,910</b>	<b>-5.98</b>

See Appendix sections A1.1 to A1.7 for additional details.

Trends in Personal Injury Collisions

Figure 1.6



**Three-Year Summary by Road System**

**Personal Injury Collisions**

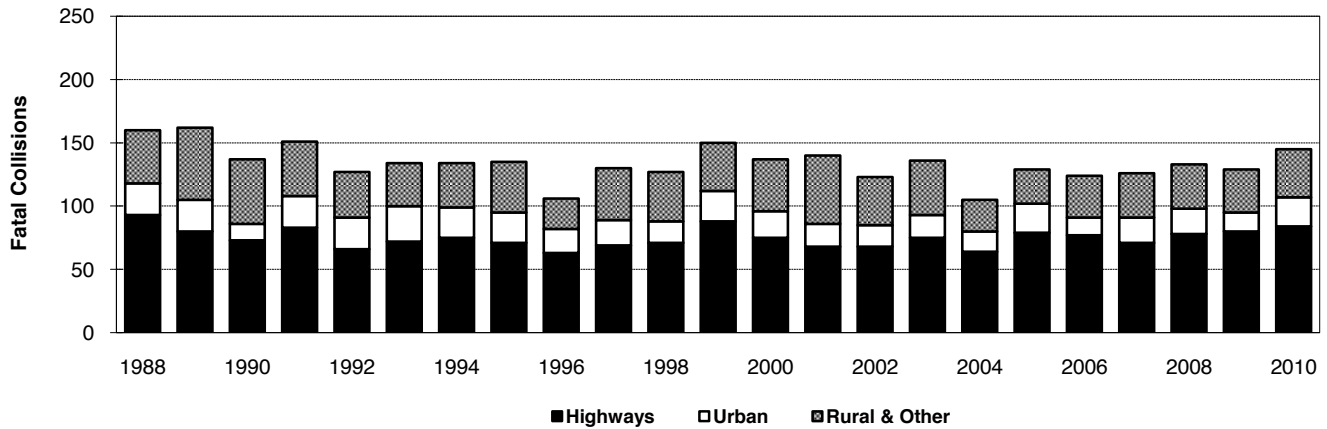
	2008	2009	2010	% Change
Provincial Highways	1,223	1,167	1,109	-4.97
Urban Streets	3,239	3,156	3,028	-4.06
Rural Roads	500	552	449	-18.66
Other Roads	182	170	157	-7.65
<b>Total Roads</b>	<b>5,144</b>	<b>5,045</b>	<b>4,743</b>	<b>-5.99</b>

See Appendix sections A1.1 to A1.7 for additional details.

# Historical Trends – SECTION 1

Trends in Fatal Collisions

Figure 1.7



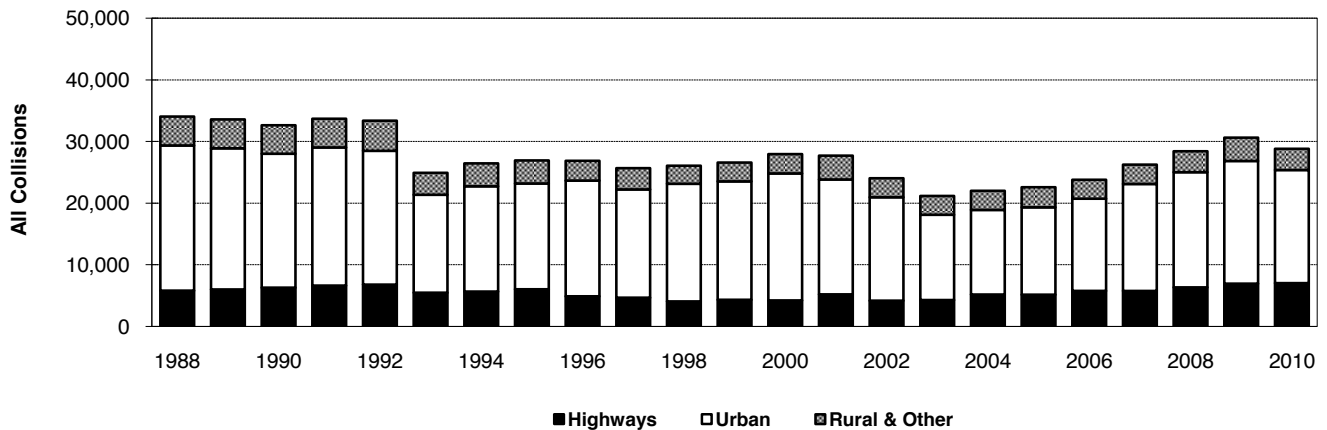
### Three-Year Summary by Road System

	Fatal Collisions			
	2008	2009	2010	% Change
Provincial Highways	78	80	84	5.00
Urban Streets	20	15	23	53.33
Rural Roads	21	30	26	-13.33
Other Roads	14	4	12	200.00
<b>Total Roads</b>	<b>133</b>	<b>129</b>	<b>145</b>	<b>12.40</b>

See Appendix sections A1.1 to A1.7 for additional details

Trends in All Reported Collisions

Figure 1.8



### Three-Year Summary by Road System

	All Collisions			
	2008	2009	2010	% Change
Provincial Highways	6,316	6,923	7,008	1.23
Urban Streets	18,687	19,898	18,347	-7.79
Rural Roads	2,534	2,950	2,579	-12.58
Other Roads	862	834	864	3.60
<b>Total Roads</b>	<b>28,399</b>	<b>30,605</b>	<b>28,798</b>	<b>-5.90</b>

See Appendix sections A1.1 to A1.7 for additional details

# Historical Trends – SECTION 1

## Property Damage Only Collisions by Month and Year

Table 1.1

Month	2005	2006	2007	2008	2009	Average	2010	% Change
						2007-2009		from 3yr Avg
January	1,967	1,691	2,133	2,180	3,030	2,447.7	2,236	-8.6
February	1,095	1,302	1,812	2,106	1,930	1,949.3	1,742	-10.6
March	1,409	1,870	1,796	1,519	2,124	1,813.0	1,609	-11.3
April	1,004	1,047	1,132	1,396	1,540	1,356.0	1,408	3.8
May	1,062	1,228	1,267	1,376	1,593	1,412.0	1,589	12.5
June	1,331	1,469	1,588	1,652	1,815	1,685.0	1,892	12.3
July	1,306	1,336	1,512	1,728	1,818	1,686.0	1,849	9.7
August	1,201	1,264	1,486	1,751	1,803	1,680.0	1,709	1.7
September	1,226	1,393	1,491	1,658	1,734	1,627.7	1,847	13.5
October	1,425	1,576	1,796	2,018	2,284	2,032.7	2,294	12.9
November	1,950	2,253	2,558	2,549	2,516	2,541.0	3,078	21.1
December	2,274	2,149	2,508	3,189	3,244	2,980.3	2,657	-10.8
<b>Totals</b>	<b>17,250</b>	<b>18,578</b>	<b>21,079</b>	<b>23,122</b>	<b>25,431</b>	<b>23,210.7</b>	<b>23,910</b>	<b>3.0</b>

## Total Injuries by Month and Year

Table 1.2

Month	2005	2006	2007	2008	2009	Average	2010	% Change
						2007-2009		from 3yr Avg
January	734	437	585	541	662	596.0	478	-19.8
February	378	472	528	530	420	492.7	394	-20.0
March	605	732	544	451	501	498.7	440	-11.8
April	447	472	478	487	417	460.7	478	3.8
May	497	551	539	532	601	557.3	531	-4.7
June	640	619	556	600	589	581.7	605	4.0
July	620	633	580	667	606	617.7	579	-6.3
August	644	667	607	678	598	627.7	550	-12.4
September	623	594	612	602	668	627.3	633	0.9
October	611	638	594	750	598	647.3	651	0.6
November	643	617	642	653	611	635.3	653	2.8
December	666	643	582	589	611	594.0	526	-11.4
<b>Totals</b>	<b>7,108</b>	<b>7,075</b>	<b>6,847</b>	<b>7,080</b>	<b>6,882</b>	<b>6,936</b>	<b>6,518</b>	<b>-6.0</b>

# Historical Trends – SECTION 1

## Total Deaths by Month and Year

Table 1.3

Month	2005	2006	2007	2008	2009	Average	2010	% Change
						2007-2009		from 3yr Avg
January	3	9	1	8	10	6.3	10	57.9
February	4	8	3	6	5	4.7	8	71.4
March	5	10	10	9	12	10.3	6	-41.9
April	7	10	14	11	16	13.7	13	-4.9
May	16	16	16	13	11	13.3	10	-25.0
June	16	7	17	19	14	16.7	15	-10.0
July	17	13	15	13	10	12.7	22	73.7
August	17	14	16	21	19	18.7	4	-78.6
September	11	12	8	17	14	13.0	16	23.1
October	13	12	18	17	11	15.3	21	37.0
November	20	11	15	17	16	16.0	29	81.3
December	18	14	10	6	15	10.3	13	25.8
<b>Totals</b>	<b>147</b>	<b>136</b>	<b>143</b>	<b>157</b>	<b>153</b>	<b>151.0</b>	<b>167</b>	<b>10.6</b>

## Total Collisions by Month and Year

Table 1.4

Month	2005	2006	2007	2008	2009	Average	2010	% Change
						2007-2009		from 3yr Avg
January	2,534	2,027	2,602	2,604	3,524	2,910.0	2,604	-10.5
February	1,398	1,645	2,213	2,530	2,251	2,331.3	2,046	-12.2
March	1,875	2,408	2,223	1,859	2,520	2200.7	1,933	-12.2
April	1,346	1,394	1,471	1,756	1,859	1,695.3	1,777	4.8
May	1,428	1,632	1,669	1,759	2,021	1,816.3	1,967	8.3
June	1,795	1,899	1,996	2,099	2,249	2,114.7	2,343	10.8
July	1,757	1,782	1,957	2,218	2,256	2,143.7	2,264	5.6
August	1,671	1,725	1,935	2,248	2,256	2,146.3	2,103	-2.0
September	1,695	1,857	1,958	2,108	2,235	2,100.3	2,301	9.6
October	1,875	2,033	2,218	2,533	2,733	2,494.7	2,819	13.0
November	2,428	2,734	3,045	3,039	2,983	3,022.3	3,580	18.5
December	2,761	2,640	2,939	3,646	3,718	3,434.3	3,061	-10.9
<b>Totals</b>	<b>22,563</b>	<b>23,776</b>	<b>26,226</b>	<b>28,399</b>	<b>30,605</b>	<b>28,410.0</b>	<b>28,798</b>	<b>1.4</b>